



A Leading Infrastructure Engineering &
Project Management Company

Corporate Profile



A leading infrastructure engineering & project management company



Engineering environment, energy management & climate change infrastructure



Trusted advisors in financing & business strategies

01



Indian multinational with 30+ years of experience in core & High-impact sectors

02



Trusted Partner across Government & Private Sector

03



Strong client focus with a commitment to top quality standards with 600 projects

04



Leadership with Trust, Integrity, Responsibility, Excellence, Pioneering & Unity of 275+ multi-disciplinary experienced team



- 1 Consistently delivering integrated engineering solutions over 3 decades
- 2 Diverse clientele spread across 26 states in india
- 3 In-house experts and integrated systems & processes
- 4 Thought leadership in green & sustainable solutions

30+

Years of
Experience

250+

Professionals

500+

Projects
Completed

₹ 3.9 Tn

Aggregate
Project Value

Environment

Urban
Infrastructure

Transportation

Industrial

Tourism



A S Kumar
Founder & MD

MBA (MIT) | 37 Yrs. Exp. |
Development Strategies



Ajay Agrawal
Executive Director

M Plan (SPA D) | 35 Yrs. Exp. |
Project Development



Chhatrapal Somkuwar
Executive Director

MBA (MU) | 20 Yrs. Exp. |
Infra Development



Sandeep Bhutkar
VP – PAE

ME (Env.) | 18 Yrs. Exp. |
Planning & Designing



Dr. Abhijit Warudkar
VP – PMC

PhD (CM) | 18 Yrs. Exp. |
Project Management



Chandrakant Honrao
AVP – MEP & ICT

ME (Elec.) | 20 Yrs. Exp. |
Electrical Infra.



Shobha Chauhan
AVP – PPP

MBA | 16 Yrs. Exp. |
Financial Consulting



Riaze Vakil
Head – International

MBA | 32 Yrs. Exp. |
International Business



Environment

- > Sustainability & Climate Change
- > Water Supply & Sewerage
- > Solid Waste
- > River & Lake Rejuvenation



Urban Infrastructure

- > City Infrastructure
- > Smart Townships
- > Bridges & Elevated Structures
- > Utilities & ICT



Transportation

- > Highways & Expressways
- > Urban Mobility
- > Smart Transport
- > Bridges & Elevated Structures



Industrial

- > Industrial Corridors
- > SEZ/FTZ
- > Industrial Parks/ Townships
- > Logistics Parks



Tourism

- > Destination Development
- > Product Development
- > Circuit Tourism
- > Religious Tourism

Planning, Design & Engineering

- > Master Planning
- > Feasibility Studies
- > Design Engineering
- > Detailed Project Reports



Transaction Advisory

- > Public Private Partnership
- > Bid Process Management
- > Transaction Advisory
- > Pre-Bid Advisory

Project Management

- > Program Manager
- > Project Management
- > Third Party Quality Control
- > Asset Management



Services ranges from “**Concept to Commissioning**”



Over 100+ Satisfied Clients



Environment

- 120 WS Schemes of 3000 MLD & 37000 km pipeline
- 30 Sewerage Schemes of 1000 MLD & 2000 km pipeline
- 45 SWM Projects of 1000 TPD
- 4 River Fronts of 28 km & 100 lakes rejuvenation
- 3.3 Mn tree Plantation



Urban Infrastructure

- 30 City Infrastructure Projects
- 10 Smart Townships
- 3 Mn sqft Buildings and Structures
- 5 Integrated brownfield city development projects
- 100 Gardens, Green spaces & Recreational areas



Transportation

- Total 13000 km Highways & Urban Roads
- 175 Nos. NH projects of 9000 km on PPP/EPC for NHAI & MoRTH
- 4000 km of Design Engg. & 600 km of supervision
- 4th Longest Tunnel of 7.7 km on Samruddhi Expressway, Maharashtra



Industrial

- 4 greenfield industrial nodes over 3500 Ha
- 20 greenfield industrial parks & township over 5000 Ha
- 10 Brownfield Industrial Parks/ Townships over 2500 Ha
- 10 MSME Clusters over 250 Ha



Tourism

- 10 Tourism Destinations
- 10 Multiple Tourism Circuits
- 3 Tourism cities & 5 Tourism vision plans
- 3 MICE / Convention centres
- ADB funded statewide Himachal Pradesh sustainable tourism project



Pioneer in

- First PPP Project in Urban Area
- First CDP under JNNURM & Integrated Development
- First Mega Tourism Circuit
- Second Smart Industrial Node
- Largest Green Sink Expressway

The image is a landscape photograph of a river at sunset. A bridge with multiple arches spans the river, and its reflection is visible in the water. In the background, there are mountains and a town. The sky is a mix of orange, pink, and blue. On the left side, there is a large, stylized orange graphic that looks like a series of connected curves or a stylized letter 'K'. The word "ENVIRONMENT" is written in white, bold, uppercase letters across the middle of the image, partially overlapping the orange graphic and the river.

ENVIRONMENT



Rural Water Supply Grid Schemes across Maharashtra under JJM | MH

954 Multi-Village Schemes from different sources | ₹ 3189 Cr.



Chh. Sambhajinagar Water Supply Scheme | MH

24x7 WS scheme for 2 Mn. Population, 1900 Km Network & 392 MLD WTP | ₹ 2750 Cr.



Water Supply Scheme for MBMC Area from Surya Source under AMRUT | MH

41 KM Rising Main and 176 KM distribution 23 ESR, SCADA system | ₹ 423 Cr.



Rural Water Supply Schemes under JJM in Gwalior Region | MP

4492 Villages rural water supply schemes in 5 districts | ₹ 1048 Cr.



Sewerage Scheme for Chh. Sambhajinagar City Under UIDSSMT | MH

4 STP of 216 MLD, 4 PSP, 60 KM trunk main & 280 KM collection network | ₹ 464 Cr.



IRMA for AMRUT in WB, Odisha & 8 NE states | MH

AMRUT Projects in 81 Cities | ₹ 8100 Cr.



Solid and Liquid Waste Management Projects under SBM | J&K

Solid and Liquid Waste Management Projects in 39 ULB



Water Audit in Kalyan Dombivali Municipal Corporation | MH

360 MLD & 950 KM network



Carbon Neutral Corridor through Plantation along 701 Km Maharashtra Samruddhi Expressway | MH

3.3 Mn. Trees plantation, 24 interchanges over 5000 ha. Linear forest | ₹ 920 Cr.

- Nashik Water Supply Scheme from Mukane Dam under Nagarothan **MH | ₹ 450 Cr.**
- Nashik Water Supply Scheme from Gangapur Dam under Finance Commission **MH | ₹ 171 Cr.**
- Sewerage Scheme for Phase-II in MBMC Area under AMRUT **MH | ₹ 147 Cr.**
- Sewerage Scheme for Jalgaon City under AMRUT **MH | ₹ 849 Cr.**
- Sewerage Scheme for Malegaon City under UIDSSMT (80 MLD STP) **MH | ₹ 255 Cr.**
- Sewerage Scheme for Ahmednagar City Under AMRUT **MH | ₹ 157 Cr.**
- Sewerage Scheme for Akkalkot City Under AMRUT **MH | ₹ 170 Cr.**



Mula-Mutha Riverfront Development, Pune | MH

17Km Mula-Mutha Riverfront & integrated infrastructure Development | ₹ 1140 Cr.

- Tripura State AMRUT 2.0 **TR | ₹ 191 Cr.**
- Wadale & Other 9 Lake Rejuvenation, Panvel **MH | ₹ 75 Cr.**
- Solid Waste Management & Treatment Infrastructure in Kolhapur **MH | ₹ 60 Cr.**
- Amritsar Water Supply & Sewerage Scheme under JICA **PB | ₹ 182 Cr.**
- Plantation along 94 km of Yashwantrao Chavan Mumbai-Pune Expressway **MH | ₹ 65 Cr.**
- Kahn Saraswati River Front Development, Indore **MP | ₹ 103 Cr.**
- Jhelum Riverfront Development, Srinagar **JK | ₹ 55 Cr.**
- Kalundre Riverfront Development, Panvel **MH | ₹ 180 Cr.**



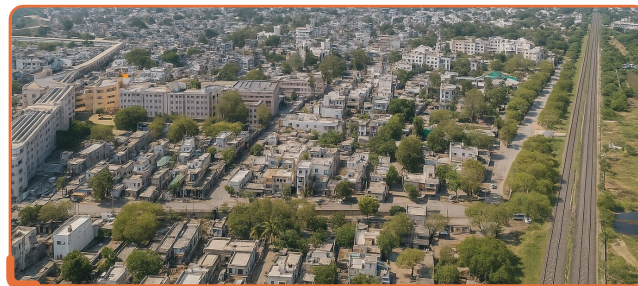
An aerial photograph of a coastal city at sunset. The sky is filled with orange and yellow clouds, and the sun is low on the horizon, reflecting on the water. The city features a dense urban area with many high-rise buildings, a large bridge spanning a body of water, and a curved coastline. On the left side of the image, there is a large, stylized orange graphic consisting of several thick, curved lines that form a partial 'K' or 'X' shape.

URBAN INFRASTRUCTURE



Srinagar Smart City | J&K

ABD & Pancity project development over 55 Sq.Km. under Smart City mission | ₹ 889 Cr.



Shegaon Pilgrimage Development, Buldana | MH

Integrated Pilgrimage & city infrastructure development over 839 Ha. | ₹ 540 Cr.



Sachkhand Gurudwara Precint Development, Nanded | MH

Precint Development of 6.60 L Sq. Ft. spread over 40 Acres | ₹ 115 Cr.



Manora Amdar Niwas (MLA Hostel), Mumbai | MH

State-of-the-Art hostel building of 12 L. Sq. Ft. BUA having twin towers of G+47 & G+28 | ₹ 1269 Cr.



Chennai Greenfield Airport's PAP Township, Parandur | TN

PAP township for 3 Villages over 100 Ha. For 998 units | ₹ 360 Cr.



Fintech City, Nandambakkam & Kavanoor, Chennai | TN

Fintech City with smart infrastructure over 150 Ha. | ₹ 676 Cr.



Affordable Housing Township under PMAY, Nagpur | MH

942 flats over 13.5 Acre affordable Housing Township | ₹ 66 Cr.



Buildings and Complexes on PPP for NWCMC, Nanded | MH

Municipal HQ & Commercial Complexes of 4 Lakh Sq. Ft. | ₹ 105 Cr.



New Town DBLP near Shirdi along Maharashtra Samruddhi Expressway | MH

Agro Prosperity Green Field Town over 1967 Ha.

- Affordable Housing Township under PMAY, Nagpur **MH | ₹ 66 Cr.**
- Commercial Land development on PPP at Coimbatore **TN | ₹ 197 Cr.**
- GST Bhavan, Pune **MH | ₹ 89 Cr.**
- New Town Hadas-Pimpalgaon near Chh. Sambhajinagar **MP**
- PIECC Township, Moshi, Pune **MH | ₹ 122 Cr.**
- Redevelopment of Municipal Colony on PPP, Usmanpur, Delhi **DL | ₹ 900 Cr.**



Shri Guru Gobind Singh Stadium, Nanded | MH

Multipurpose stadium over 22 Acres with cricket/hockey field, pavillion & stand; Seating Capacity 35000 | ₹ 42 Cr.

- New School Building at Kausa, Thane **MH | ₹ 8 Cr.**
- Intergrated City Infrastructure, Panvel **MH | ₹ 504 Cr.**
- Nanded City Infrastructure **MH | ₹ 733 Cr.**
- Dharmaveer Anand Dighe Cancer Hospital, Thane **MH | ₹ 665 Cr.**
- District Sport Complex, Ahilyanagar **MH | ₹ 10 Cr.**
- Commercial Complexes on PPP for Kolhapur Municipal Corporation **MH | ₹ 100 Cr.**
- Integrated Urban Development of Chitrakoot town funded by ADB **MP | ₹ 100 Cr.**





TRANSPORTATION



Expressways & National Highways across India

175 no. of Expressways/ NH Projects with total length of 9000 km across India for NHAI/ MoRTH as Financial cum Legal Consultant | ₹ 240000 Cr. | ₹ 240000 Cr.



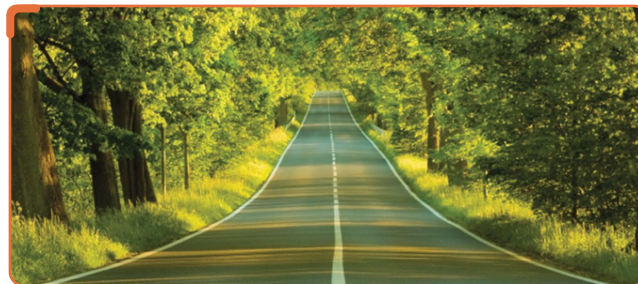
Maharashtra Road Improvement Program on HAM / EPC

2/4 lane 1266 KM SH across Maharashtra | ₹ 4725 Cr.



Access controlled Greenfield Maharashtra Sammrudhi Expressway (Ghoti to Amane) | MH

6 Lane Greenfield Expressway with 78KM Length, 10.5 KM Tunnel & 11.3 KM Viaducts | ₹ 6865 Cr.



SH & MDR in Assam (Axom Mala) funded by AIIB / NDB

2/4 Lane SH & MDR of 463 KM funded by AIIB/NDB | ₹ 4384 Cr.



Transportation - Key Projects



8 Laninig of NH-848 (Vadpe Thane Section) | MH

8 Lane (MC) & 4 Lane (SR) of 20 KM & 2 Creek bridges. | ₹ 1182 Cr.



Urban Road Improvement Plan for District Headquarters | HP

2 lane Urban Roads of 356 Km in Kullu & Mandi | ₹ 4310 Cr.



Agardanda Creek Bridge on Revas Redi Coastal Highway, Raigad | MH

4 KM Creek Bridge On Revas Redi Coastal Highway | ₹ 1032 Cr.



Versova Bandra Sealink | MH

DPMS for 8 Lane Versova Bandra Sealink of 17 KM | ₹ 6900 Cr.



Transportation - Key Projects



Multimodal Logistic Park at Chh.Sambajinagar on PPP | MH

Multimodal Logistic park and transport nagar over 20 Ha. | ₹100 Cr.

- Chhatisgarh Road Connectivity Project under ADB Loan III **CH** | ₹ 3332 Cr.
- NH-548 D (Ahmedpur – Patoda Section) **MH** | ₹ 1011 Cr.
- NH 548 C (Satara – Tembhurni Section) **MH** | ₹ 960 Cr.
- 10 Lanning of Western Expressway, Mumbai **MH** | ₹ 837 Cr.
- NH-48 (Satara - Kagal Section) **MH** | ₹ 531 Cr.
- Shegaon City Roads **MH** | ₹ 191 Cr.
- Dehradun-Mussoorie Ropeway **UK** | ₹ 300 Cr.
- Yousmarg-Doodhpathri-Tosmaidan-Gulamarg Greenfield Road **J&K** | ₹ 1200 Cr.
- Jhansi to BIDA Industrial Township Link Expressway **UP** | ₹ 1600 Cr.
- ATMS at Bundhelkhand Expressway **UP**
- Wayside Amenities along Purvanchal Expressway **UP** | ₹ 400 Cr.
- Karad Bus Terminus **MH** | ₹ 14 Cr.



Latur City urban roads | MH

Urban Roads & Junctions of 42 KM in Latur | ₹109 Cr.

- Road Safety Audit & Blackspot elimination for Panvel City urban roads **MH** | ₹ 52 Cr.
- Road Safety Audits of PWD roads in Kerala **KL**
- Hanumangadi to Ranibaug Ropeway, Nainital **UK** | ₹ 1593 Cr.
- Hyderabad Metro on PPP **TG** | ₹ 12132 Cr.
- Kerala State Transport Project funded by World Bank **KL** | ₹ 400 Cr.
- Nanded City Urban Roads & Bridges **MH** | ₹ 102 Cr.
- Flyovers & Creek Bridges in Mumbai City **MH** | ₹ 2200 Cr.
- Mumbai Pune Expressway Missing Link Tunnel **MH** | ₹ 5400 Cr.
- Thane City Roads **MH** | ₹ 492 Cr.
- Navi Mumbai City Roads **MH** | ₹ 50 Cr.
- Inter State Bus Terminal, Indore **MP** | ₹ 104 Cr.





INDUSTRIAL

An aerial photograph of a large industrial park. In the foreground, there is a central office building with a modern glass facade and a circular driveway with a fountain. Behind it are several large, long warehouse buildings with grey roofs. The park is surrounded by roads and greenery. In the background, a city skyline is visible under a clear blue sky. A large orange graphic element, resembling a stylized 'K' or a series of curved lines, is overlaid on the left side of the image.



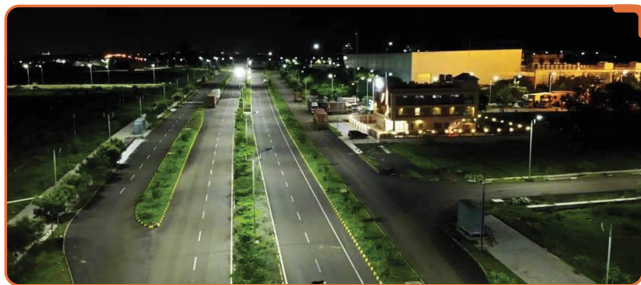
BIDA's Integrated Industrial Township, Jhansi | MP

Integrated Industrial Township over 400 Ha. | ₹ 3200 Cr.



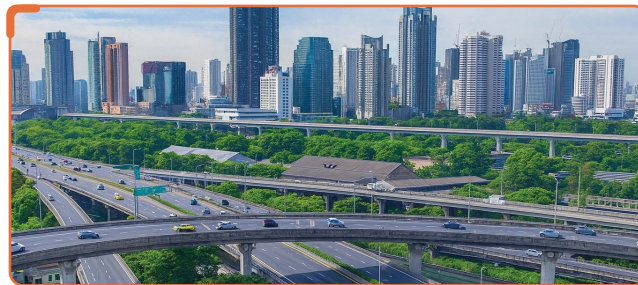
Integrated Industrial Area, Pilibhit | UP

Multiproduct industrial area over 385 Ha. | ₹ 343 Cr.



NICDIC's AURIC, Integrated Industrial Township, Shendra, Chh. Sambhajinagar | MH

Integrated Industrial Township over 845 Ha. | ₹ 656 Cr.



Infrastructure Works, NOIDA | UP

Multiple Infrastructure works in NOIDA over 203 Sq. Km. | ₹ 2000 Cr.



Integrated Industrial Township, Chainpura, Dist. Guna | MP

Multiproduct non polluting industrial township over 334 Ha. |
₹ 341 Cr.



Industrial Clusters in Bodoland Territorial Region | AS

12 Livelihood Industrial clusters over 110 ha. Across 4 districts |
₹ 367 Cr.



Electronic Hardware Manufacturing Cluster, Tirupati | AP

Integrated Industrial infrastructure for EPMC Tirupati over 200 Ha. |
₹ 339 Cr.



Pithampur Industrial area Sec-1,2,3,5, SEZ 1,2 & 5, Indore | MP

Upgradation of Industrial Infrastructure | ₹ 150 Cr.



Integrated Industrial Park, Lalbaug-Basvi, Dhar | MP

Multiproduct industrail township over 200 Ha. | ₹ 198 Cr.



Integrated Industrial Area, Makhannagar, Dist. Narmadapuram | MP

Multiproduct integrated industrial area over 419 Ha. | ₹ 420 Cr.



Integrated Industrial Township, Parichha Ahir & Kirar, Dist. Shivpuri | MP

Multiproduct non polluting industrail township over 110 Ha. | ₹ 83 Cr.

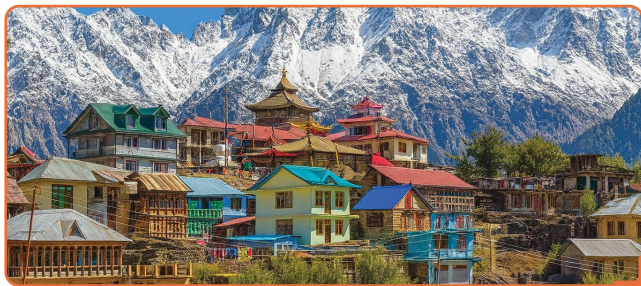
- Multi-product Industrial Area, Hathod, Relwa & Kasarwadi **MP | ₹ 215 Cr.**
- Industrial Clusters, Indore **MP | ₹ 32 Cr.**
- Readymade Garment Park, Gwalior **MP | ₹ 17 Cr.**
- Infrastructure Works, Greater NOIDA **UP | ₹ 1283 Cr.**
- Infrastructure Works, YEIDA **UP | ₹ 930 Cr.**
- NICDIC's Integrated Industrial Township, Greater NOIDA **UP | ₹ 426 Cr.**

- Industrial Estate SIDCUL, Haridwaar **UK | ₹ 200 Cr.**
- Gems & Jewellery SEZ park on PPP, Indore **MP | ₹ 255 Cr.**
- HVDC Powergrid Project, Hinghanghat, Wardha **MH | ₹ 72 Cr.**
- Integrated Industrial Township, Bhampura, Dist. Sheopur **MP**
- Multiproduct industrial township over 283 Ha. **| ₹ 290 Cr.**



An aerial photograph of a tropical resort. A winding river flows through a dense forest of palm trees. In the foreground, there are several buildings with red-tiled roofs and a large swimming pool. The word "TOURISM" is written in white capital letters across the center of the image. On the left side, there are three large, stylized orange shapes that look like abstract brushstrokes or arrows pointing towards the center.

TOURISM



Himachal Pradesh Sustainable & Inclusive Tourism Development Project funded by ADB | HP

Tourism Infra development in Hamirpur, Kangra, Kullu, Mandi, and Shimla districts. | ₹ 1700 Cr.



Becharaji Temple Precinct & Pilgrimage Development, Mehsana | GJ

Pilgrimage precinct & surrounding infrastructure development over 500 Ha. | ₹ 200 Cr.



Lonar Crater Destination Development, Buldana | MH

Eco heritage tourism infra, planatorium & Resort | ₹ 91 Cr.



Sant Dyaneshwar Garden, Paithan, Dist. Chh. Sambhajinagar | MH

State-of-the-art recreational garden over 125 Ha. | ₹ 150 Cr.



Kumarakom Tourism Destination, Kottayam | KL

Nature based Back Water tourism over 52 Sq. Km. | ₹ 1105 Cr.



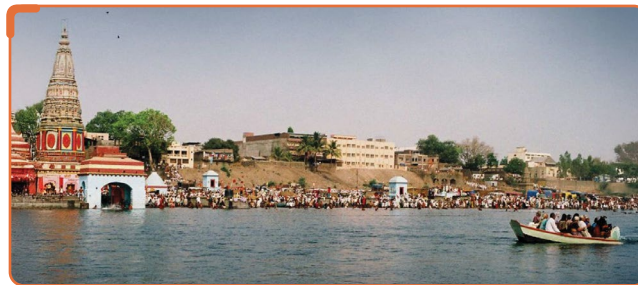
Vagamon Thekkadi Eco-tourism Circuit | KL

Eco Adventure Tourism Park at 100 Acres, Nature trails, Tourist basic amenities | ₹ 55 Cr.



Calicut International Convention Center | KL

International Convention centre of 2 L. Sq. Ft. | ₹ 120 Cr.



Solapur – Tuljapur Mega Tourism Circuit | MH

Mega tourism Circuit for Solapur-Akkalkot-Pandarpur-Tuljapur Pilgrimage | ₹ 42 Cr.



Delhi Haat, Janakpuri | DL

Vibrant Open air market and cultural space for Crafts cuisines and cultural events over 8 Acres | ₹ 91 Cr.



Mumbai Suburban Tourism Plan | MH

Tourism infra, Beaches, capacity building, events & promotions across mumbai suburban area | ₹ 800 Cr.



Lakshadweep Tourism Circuit | LD

Sustainable and inclusive eco tourism development across 9 islands | ₹ 400 Cr.

- Mahur Pilgrimage Development, Nanded **MH** | ₹ 216 Cr.
- Kovalam Poovar Tourism Corridor, Trivandrum **KL** | ₹ 4747 Cr.
- Nanded Mega Tourism Circuit **MH** | ₹ 43 Cr.
- MP Tourism Circuit **MP** | ₹ 5 Cr.
- Indore Convention Center **MP** | ₹ 270 Cr.
- Buldana District Tourism Plan **MH** | ₹ 370 Cr.
- Nanded District Tourism Plan **MH** | ₹ 530 Cr.



> Why Fortress?

> Grassroot understanding
& operations

> Experienced Multi-disciplinary
in house professionals

> Expertise in Government
Institutional framework
& operations

> Proven track-record
across Infrastructure Project
Life cycle

> Integrated and sustainable
solutions under one roof

> Integrated and holistic
approach

> Partner with client in
entire project life cycle.

> Stakeholder driven
approach

> Long-standing relationships
with Clients

> Connect with us



Fortress Infracon Ltd.

+91 (022) 4575 5465

 www.fortress.co.in

 fortress@fortress.co.in

> **Corporate Office**

502, Nitco Biz Park, 5th Floor, Plot No. C/19, Road No. 16, Wagle Estate, Thane– 400604, Mumbai Metropolitan Region, Maharashtra, India

> **Regional Office**

Unit No. 514, City Centre, Plot No. 5, Sector-12, Dwarka, New Delhi - 110075

> **Europe Office**

Rua Projectada à Matinha, Prédio A, 1º-B, 1950-327 Lisboa, Portugal